

Watanabe Chemical News

WN-151117-282

N09830 H-(2)Abz-Acp(6)-Ala-Phe(4-NO₂)-Leu-OH

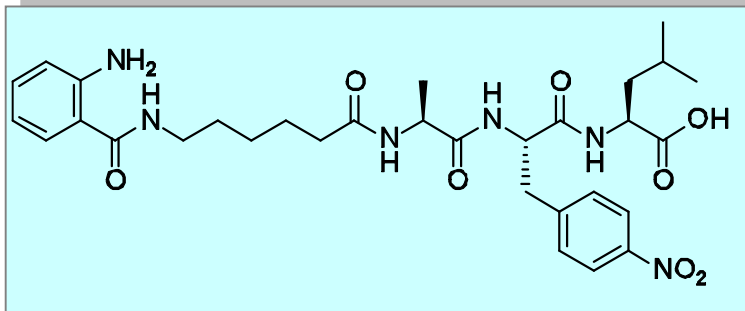
Reagent for measurement of inhibitory activity of
Angiotensin converting Enzyme (ACE)

Appearance : white powder (freeze-dried)

CAS RN® : 815580-33-7

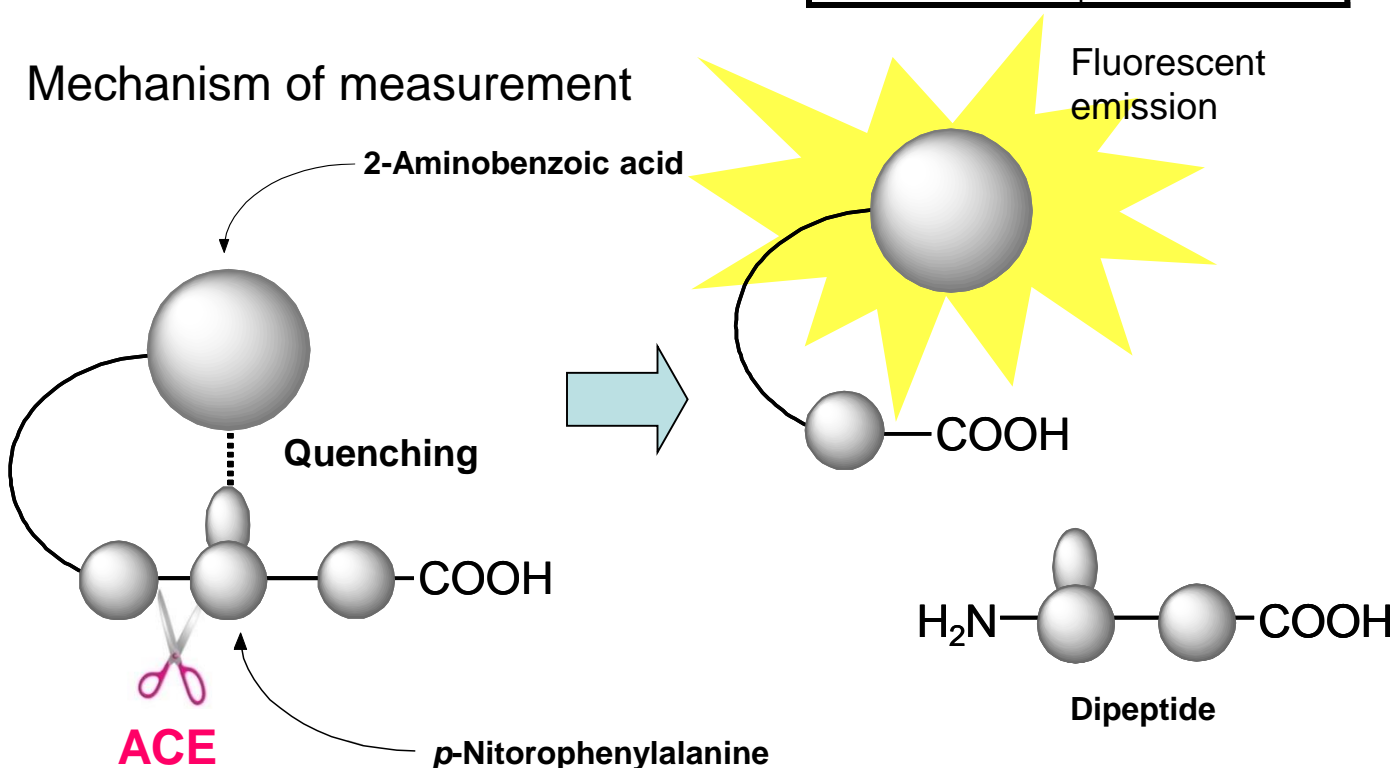
Mw : 626.70

Storage Condition : Keep Dry in Freezer



Quantity	Price
5 mg	\$82
10 mg	\$137

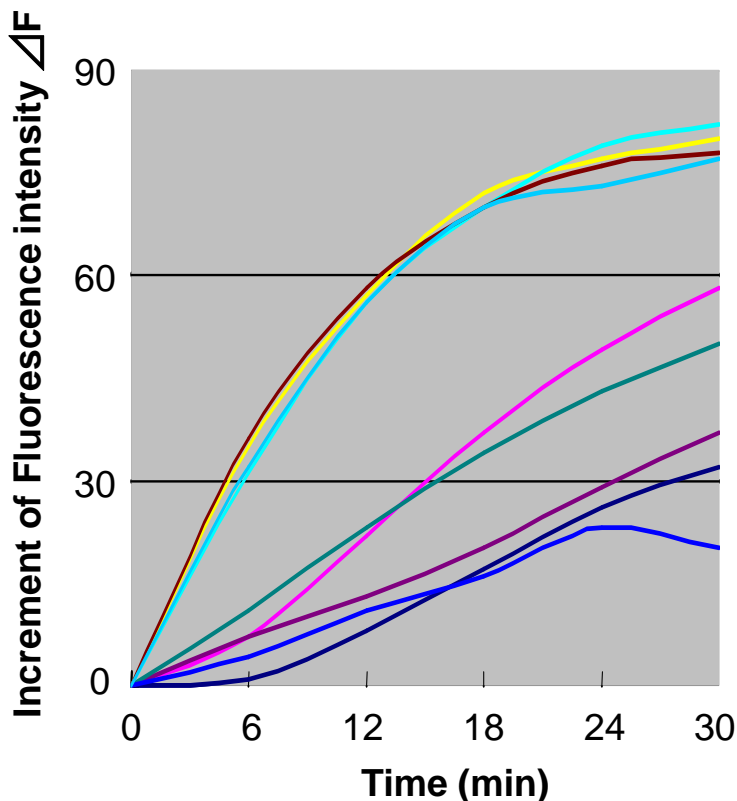
Mechanism of measurement



Benefits of measurement by fluorescent substrate

1. No need of complicated aftertreatment
2. The increase of detection sensitivity enabled a measurement by a small amount of substrate at low cost .
3. Several samples can be detected at one time by using a fluorescent plate reader.

Screening Result of ACE inhibitory substance (provided by Gekkeikan Sake Co.,Ltd.)



- GABA
- Carnitine
- Green tea powder
- Control
- Collagen
- Non-peptide K
- Seaweed peptide
- Silk peptide
- Red wine

Conditions

Excitation wavelength : 340 nm
 Measurement wavelength : 415 nm
 Incubated at 37°C
 pH 8.3

Concentration by Assay System

Powder sample 500ppm (w/v)
 Liquid sample 0.5% (v/v)
 Substrate(this product) 5ppm (w/v)
 Enzyme solution 2.5mU / ml

Substance	Major indications	Concentration	Reaction rate (ΔF/min)	Inhibitory activity (%)
Control			2.43	Standard
Silk peptide	Liver dysfunction, Hypertension	powder 500ppm	1.27	48
Collagen peptide	Skin care	"	2.13	12
Carnitine	Fat burning, Tiredness	"	2.54	- 4
GABA	Hypertension, Relaxation	"	2.66	-10
Seaweed peptide	Hypertension	"	1.24	49
Green tea powder	Hyperglycemia	"	2.42	1
Non-peptide K	Anti-oxidation, Antiinflammatory	Undiluted liquid 0.5%	1.70	30
Red wine	(Anti-oxidation)	"	0.79	67

This product was developed with the research grant by Japan Science and Technology Agency, JST Innovation Plaza Fukuoka.
 (Supported by Setsuko Ando, Fukuoka University)

WATANABE CHEMICAL INDUSTRIES, LTD.

〒730-0853 2-2-5 Sakaimachi Naka-ku, Hiroshima JAPAN

TEL:+81 82 231 0540 FAX:+81 82 231 1451

URL:<https://www.watanabechem.co.jp/en/>

E-mail: sales@watanabechem.co.jp