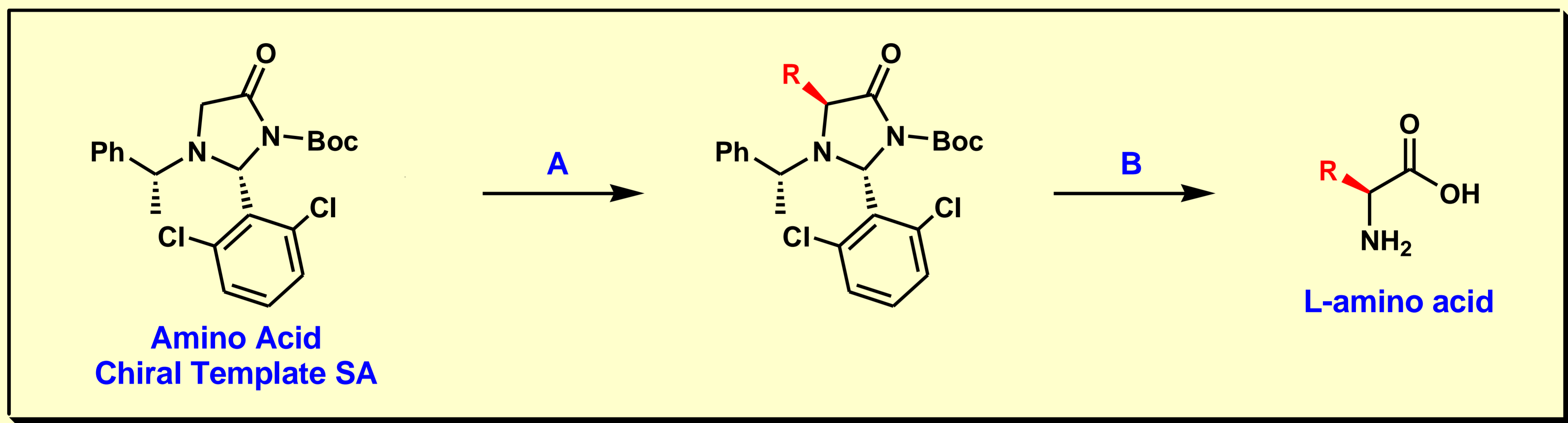


## NEW Product Information

### Amino Acid Chiral Template SA & RA

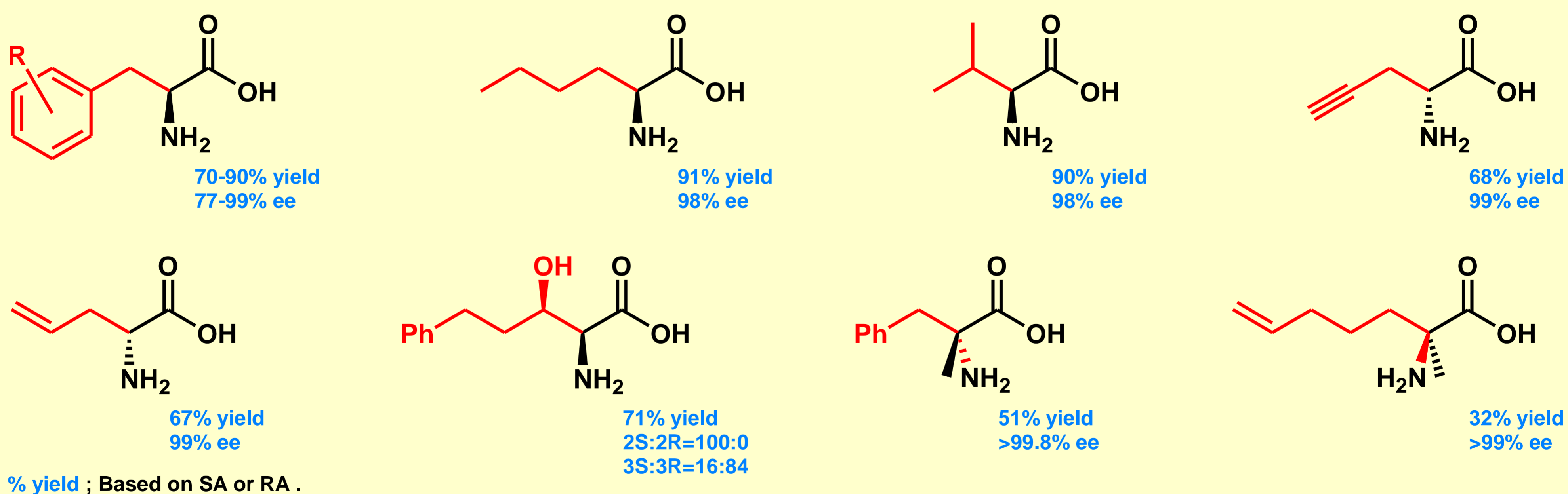
Major advantages :

- **High yield** in highly stereo selective
- **Broad applicability**
- **D/L- both** amino acids accessible
- **Easy** operation

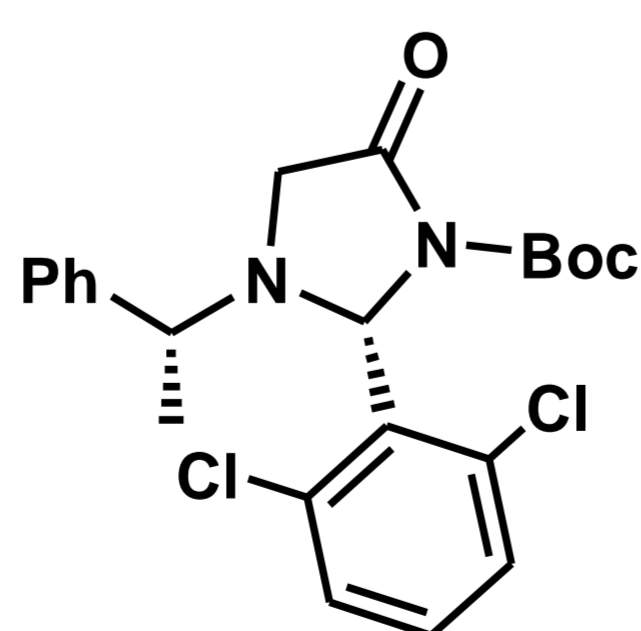


[Substituted phenylalanine] : **A** ; 1) NaHMDS/THF(-20°C), 2) ArCH<sub>2</sub>Br    **B** ; 1) H<sub>2</sub>SO<sub>4</sub>/PhCl(rt), 2) H<sub>2</sub>O(heat)  
 [Saturated alkyl glycine] :    **A** ; 1) NaHMDS/THF(-20°C), 2) RX            **B** ; 1) H<sub>2</sub>SO<sub>4</sub>/PhCl(rt), 2) H<sub>2</sub>O(heat)  
 [Unsaturated alkyl glycine] :    **A** ; 1) NaHMDS/THF(-20°C), 2) RX            **B** ; 1) MsOH (or TFA)/Toluene(30-60°C), 2) H<sub>2</sub>O(60°C)  
 [β-Hydroxy amino acid] :        **A** ; 1) LDA/THF(-78°C), 2) R'CHO            **B** ; 1) 6N-HCl(reflux) then pH6-7, 2) H<sub>2</sub>, Pd-C/EtOH(2 atm), 3) 1N-HCl/THF(rt, 50h)

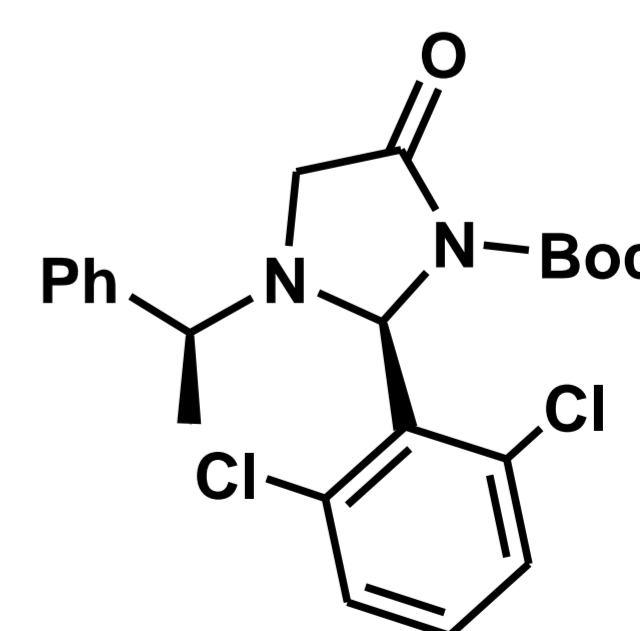
**Crystal** and can be applied to various types of AA  
 α-Amino Acids, saturated/unsaturated Amino Acids,  
 β-Hydroxy Amino Acids, α, α-Di-substituted Amino Acids



Code	A00701	
Name	Amino Acid Chiral Template SA	
Price	1g	\$228
	5g	\$1,000



Code	A00702	
Name	Amino Acid Chiral Template RA	
Price	1g	\$228
	5g	\$1,000



Reference : Monthly Fine Chemical May, 2009 Vol.38 No.5 ( Kazumi Okuro, Masaru Mitsuda, Kaneka Corp. Frontier Bio Medical Lab.)

## WATANABE CHEMICAL INDUSTRIES, LTD.

〒730-0853 2-2-5 Sakaimachi Naka-ku, Hiroshima JAPAN

TEL:+81 82 231 0540 FAX:+81 82 231 1451

URL:https://www.watanabechem.co.jp/en/

E-mail: sales@watanabechem.co.jp